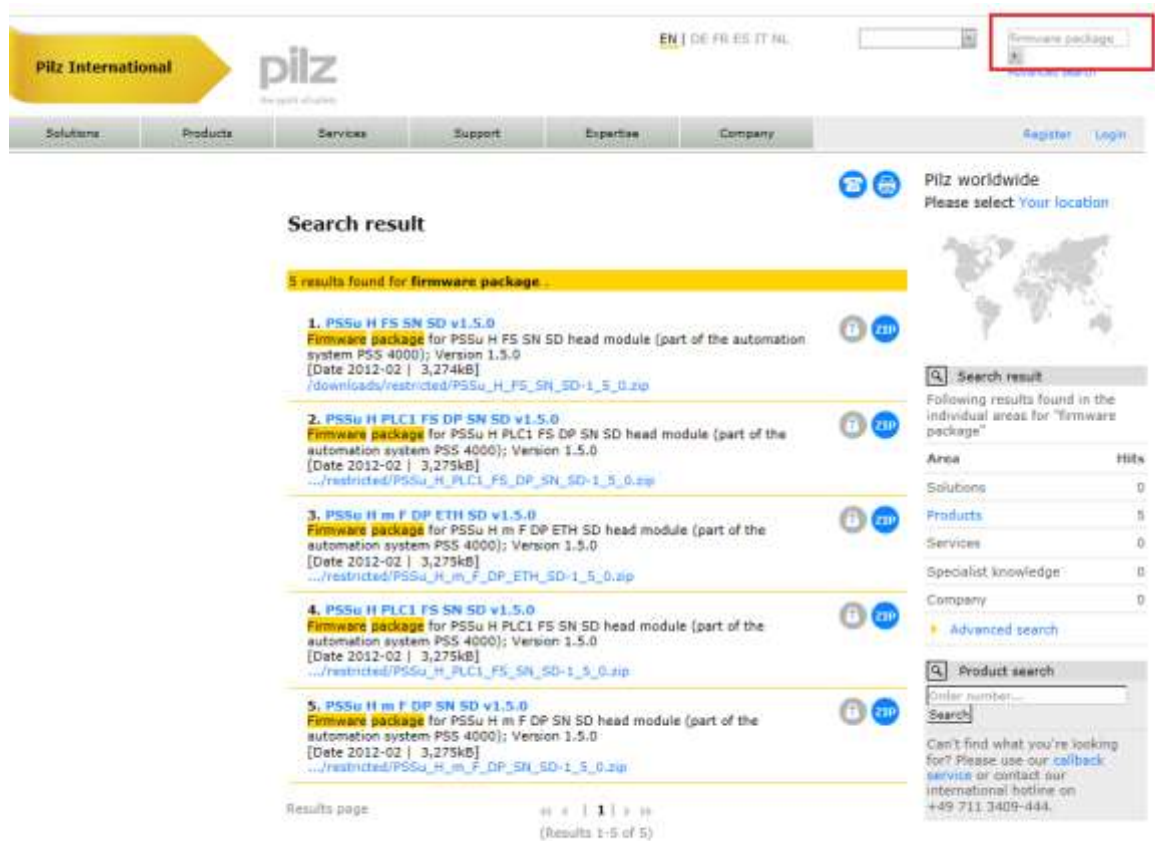


Firmware Update PSS4000



1. How to find the firmware files on pilz.com

- Go to www.pilz.com
- Search on the start-site for “firmware package”
- Download the Firmware



The screenshot shows the Pilz International website with a search bar at the top right containing the text "firmware package". Below the search bar, the search results are displayed under the heading "Search result".

Search result

5 results found for **firmware package**.

- 1. PSSu H FS SN SD v1.5.0**
Firmware package for PSSu H FS SN SD head module (part of the automation system PSS 4000); Version 1.5.0
[Date 2012-02 | 3,274kB]
.../restricted/PSSu_H_FS_SN_SD-1_5_0.zip
- 2. PSSu H PLC1 FS DP SN SD v1.5.0**
Firmware package for PSSu H PLC1 FS DP SN SD head module (part of the automation system PSS 4000); Version 1.5.0
[Date 2012-02 | 3,275kB]
.../restricted/PSSu_H_PLC1_FS_DP_SN_SD-1_5_0.zip
- 3. PSSu H m F DP ETH SD v1.5.0**
Firmware package for PSSu H m F DP ETH SD head module (part of the automation system PSS 4000); Version 1.5.0
[Date 2012-02 | 3,275kB]
.../restricted/PSSu_H_m_F_DP_ETH_SD-1_5_0.zip
- 4. PSSu H PLC1 FS SN SD v1.5.0**
Firmware package for PSSu H PLC1 FS SN SD head module (part of the automation system PSS 4000); Version 1.5.0
[Date 2012-02 | 3,275kB]
.../restricted/PSSu_H_PLC1_FS_SN_SD-1_5_0.zip
- 5. PSSu H m F DP SN SD v1.5.0**
Firmware package for PSSu H m F DP SN SD head module (part of the automation system PSS 4000); Version 1.5.0
[Date 2012-02 | 3,275kB]
.../restricted/PSSu_H_m_F_DP_SN_SD-1_5_0.zip

Results page: 1 (Results 1-5 of 5)

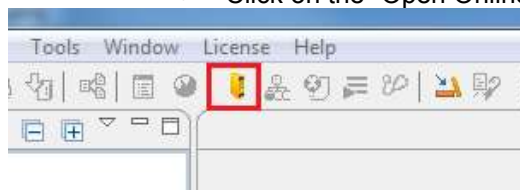
On the right side of the page, there is a "Pilz worldwide" section with a world map and a "Search result" section showing a table of hits for various areas:

Area	Hits
Solutions	0
Products	5
Services	0
Specialist knowledge	0
Company	0

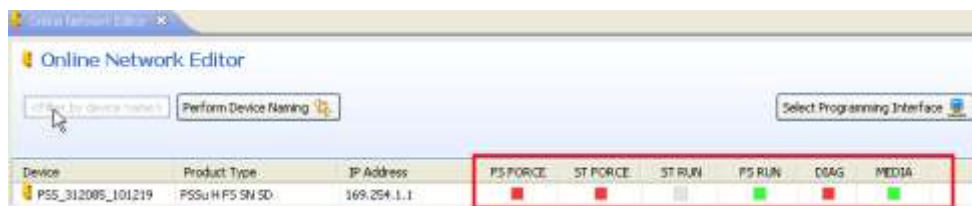
Below the table, there is a "Product search" section with a search bar and a "Search" button. A note at the bottom of the search section reads: "Can't find what you're looking for? Please use our [callback service](#) or contact our international hotline on +49 711 3409-444."

2. How to Update the Firmware of PSS 4000 head modules

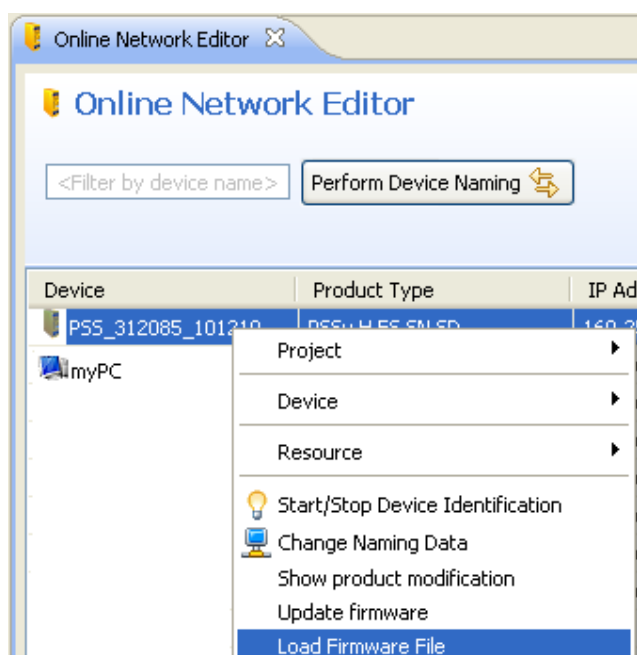
- Check if a SD card is inside the PSS4000 device
- Make a direct connection from your PC to the PLC-head-module or I/O-head-module
- Change the IP from your PC in the range from the devices
- (for example PC:169.254.1.5 and PSS:169.254.1.1)
- Switch on the PSS4000 Head
- Start PAS4000
- Click on the “Open Online Network Editor”-Button



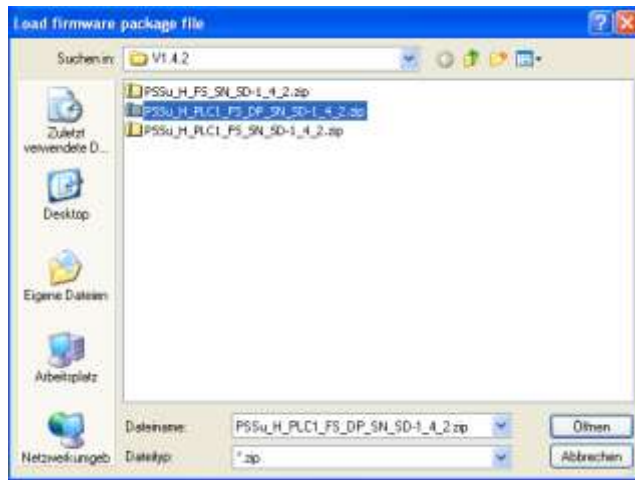
- Click the Button “Scan network”
- Now you see your device. If you see flashing lights in the line of your PSS4000 Head. You have a correct connection. Only then a Firmware Update is possible.



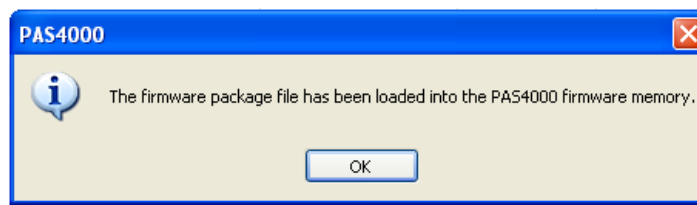
- Load the firmware zip file for the PSSu Head Module
- Therefore take the mouse und click with the right button on your device.
- Choose “Load Firmware File”.



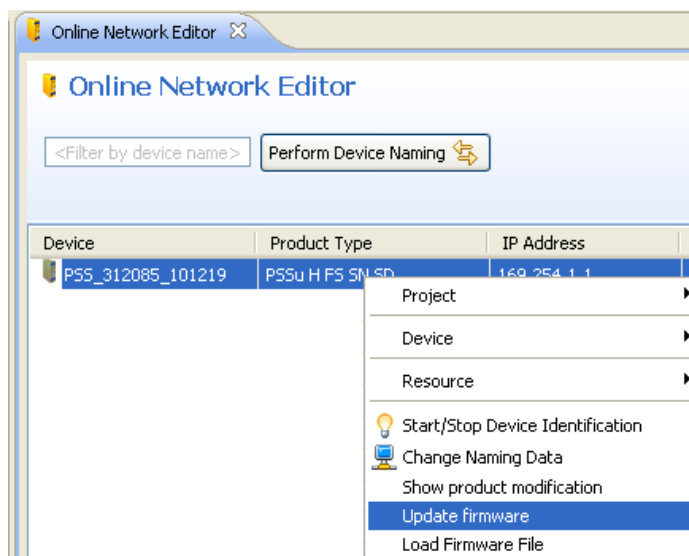
- Choose the right firmware file for your PSSu Head Module



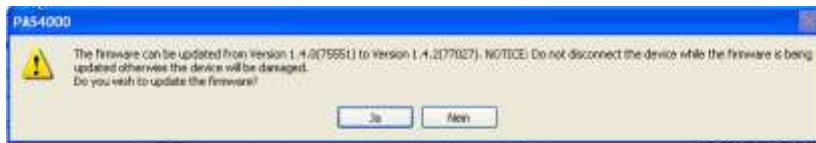
- The firmware package file has been loaded.
- Click on “OK” to continue.



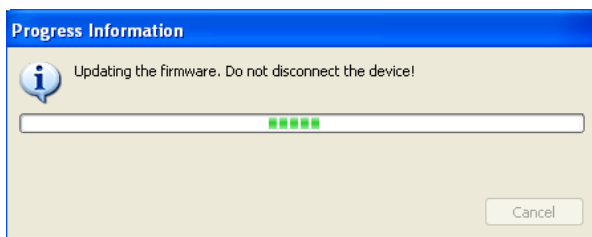
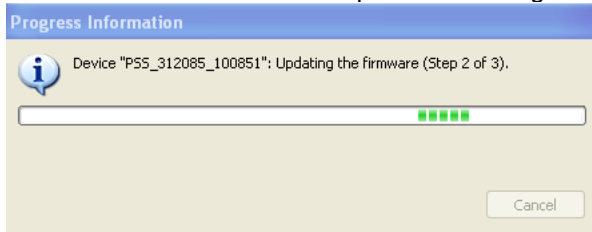
- Start the firmware update.
- Therefore take the mouse und click with the right button on your device.
- Choose “Update firmware”.



- Confirm with „yes“.



- Firmware update is starting.



- Firmware update was successful.



- Scan your network again.
- Click on “Scan network”.
- Click on “Device information” to check which firmware is on your device.

