

PSEN ml b 2.1 unit

570402



Safety guard locking device PSENmlock, fully coded, with safety switch and actuator, with guard locking, with power reset, 8-pin M12 male connector, 0.23 m cable, single connection

Technical details

General data

| | |
|---------------------------------|--------------------------------------|
| Approval: | CE, UKCA, cULus Listed, FCC, IC, TÜV |
| Sensor principle: | Transponder |
| Coding level to ISO 14119: | High |
| Classification to EN 60947-5-3: | PDDb |
| Transponder coding: | fully coded |
| Reset type: | Power reset |
| Suitable for series connection: | no |
| unit type: | Unit |

Technical data

Electrical data

| | |
|----------------------------|-----------|
| Supply voltage (V): | 24 - 24 V |
| Type of supply voltage U1: | DC |
| Power consumption DC: | 1 W |

Inputs

| | |
|----------------------|---------|
| Number of inputs: | 2 |
| DC voltage at input: | 24 V DC |

Semiconductor outputs

| | |
|-------------------------|---|
| Number of OSSD outputs: | 2 |
| Number of sig. outputs: | 1 |

| | |
|---------------------------------|---|
| Potential isolation S/C O: | No |
| S/C output short circuit proof: | Yes |
| Utilisation cat. to EN 60947-1: | DC-13 |
| Environmental data | |
| Ambient temperature standard: | EN 60068-2-14 |
| Ambient temperature: | 0 - 60 °C |
| Storage temperature standard: | EN 60068-2-1/-2 |
| Climatic suitability standard: | EN 60068-2-78 |
| Humidity rating: | 93 % r. h. at 40 °C |
| EMC to standard ...: | EN 55011: Class A, EN 60947-5-3, EN 61326-3-1 |
| Vibration to standard ...: | EN 60068-2-6 |
| Acc. shock to standard1: | 30g |
| Overvoltage category: | III |
| Pollution degree clear.&creep.: | 3 |
| UL enclosure type: | type 1 |
| Times | |
| Pulse length lock/unlock req.: | 350 - 400 ms |
| Mechanical data | |
| Bend radius (when laying) K1: | 5 x Ø |
| Escape release available: | No |
| Max. vertical offset: | +/-3.0 mm |
| Max. ang. offset round X axis: | +/-2.0 deg |
| Max. ang. offset round Y axis: | +/-2.5 deg |
| Max. ang. offset round Z axis: | +/-7.5 deg |
| Max. offset closing direction: | +/-2 mm |
| Type 1 actuator: | PSEN ml 2.1 |
| Connection type: | M12, 8-pin male |
| Cable lines: | LiYY 8 x 0.25 mm ² |
| Product material: | Zn, Aluminium, Galvanised steel, Plastic, Stainless steel |

| | |
|--------------------------------|------------------------------|
| Height dimension: | 217.2 mm |
| Width dimension: | 40 mm |
| Depth dimension: | 40 mm |
| Net weight: | 1100 g |
| Gross weight: | 1450 g |
| Transponder | |
| Operating frequency: | 122 kHz - 128 kHz |
| Environment | |
| WEEE classification (08/2018): | 5 devices (feed size < 50cm) |
| Commercial data | |
| ECLASS version: | ECLASS-13 |
| ECLASS Reference Feature: | 27272603 |
| ETIM Version: | ETIM-9.0 |
| ETIM Reference Group: | EG000026 |
| ETIM Reference Feature: | EC002593 |
| UNSPSC 25: | 39122205 |
| GTIN: | 4046548081732 |
| Volume: | 0 dm3 |
| Harmonized System Code: | 85365019 |
| Type of tariff number: | TARIC |
| Use of customs tariff number: | Ausfuhr, Einfuhr |
| Quantity per packaging unit: | 1 |

Optional accessories



540346

PSEN cable M12-8sf M12-8sm, 1m



540347

PSEN cable M12-8sf M12-8sm, 1,5m



540326

PSEN cable axial M12 8-pole 30m



540342

PSEN cable M12-8sf M12-8sm, 10m



540320

PSEN cable axial M12 8-pole 5m



540343

PSEN cable M12-8sf M12-8sm, 20m



540321

PSEN cable axial M12 8-pole 10m



540344

PSEN cable M12-8sf M12-8sm, 30m












540345

PSEN cable M12-8sf M12-8sm, 0,5m



570499

PSEN screw set bracket sliding door

| | | |
|---|--------|--------------------------------------|
|  | 570497 | PSEN ml door handle swinging door 80 |
|  | 570475 | PSEN ml escape release cordset 4,0m |
|  | 570498 | PSEN screw set bracket swinging door |
|  | 570495 | PSEN ml door handle sliding door |
|  | 570473 | PSEN ml escape release cordset 3,0m |
|  | 570496 | PSEN ml door handle swinging door 70 |
|  | 570474 | PSEN ml escape release cordset 3,5m |
|  | 570493 | PSEN ml bracket swinging door 70 |
|  | 570471 | PSEN ml escape release cordset 2,0m |



570494

PSEN ml bracket swinging door 80



570472

PSEN ml escape release cordset 2,5m



540333

PSEN cable M12-8sf, 20m



570468

PSEN ml escape release cordset 1,0m



570469

PSEN ml escape release cordset 1,25m



570466

PSEN ml escape release cordset 0,5m



570467

PSEN ml escape release cordset 0,75m



570462

PSEN ml escape release extension



570484

PSEN ml actuator 10° adapter



570485

PSEN ml actuator center ring



570463

PSEN ml escape release cordset 1,5m hd1



540319

PSEN cable axial M12 8-pole 3m



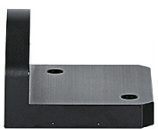
570460

PSEN ml escape release



570461

PSEN ml auxiliary release hd1



570492

PSEN ml bracket sliding door



570470

PSEN ml escape release cordset 1,5m



570490

PSEN ml mounting plate



540340

PSEN cable M12-8sf M12-8sm, 2m



540341

PSEN cable M12-8sf M12-8sm, 5m
