

## PSSu E S 2DOR 10

312510



PSSu, electronic module, standard, digital inputs and outputs, 2 outputs, relay contacts, 10 A, N/O, potential-free.

## Technical details

General data	
Approval:	CE, UKCA, BG, cULus Listed
Application range:	Standard
Technical data	
Electrical data	
Permitted loads:	Resistive, Inductive
Relay outputs	
Number of relay outputs:	2
Utilisation cat. AC/DC1 stand.:	EN 60947-4-1
Utilisation cat. AC15/DC13sta.:	EN 60947-5-1
Safety contacts: AC at UL:	240 VAC G. P.
Safety contacts: pilot duty:	3.0 A
Contact relay fuse prot. to:	EN 60947-5-1
Relay contact material:	AgCuNi
Pot.isol. RICont - Uint1:	4900 V (safe separation)
Pot.isol. RICont to U2:	4900 V (safe separation)
Pot.isol. RICont1 to CRail:	3050 V (basic insulation)
Pot.isol. RICont1 to RICont2:	4900 V (safe separation)
Environmental data	
Climatic suitability to ...:	EN 60068-2-30, EN 60068-2-2, EN 60068-2-1, EN 60068-2-78, EN 60068-2-14

Ambient temperature standard:	EN 60068-2-14
Ambient temperature:	0 - 60 °C
Ambient temp. with UL:	60 °C
Storage temperature standard:	EN 60068-2-1/-2
Climatic suitability standard:	EN 60068-2-30, EN 60068-2-78
Humidity rating:	93 % r. h. at 40 °C
Condensation permitted?:	Not permitted
Perm. operating height ASL:	2000 m
EMC to standard ...:	EN 61131-2, EN 61000-4-4, EN 61000-4-5, EN 61000-4-6, EN 61000-4-2, EN 61000-4-3
Vibration to standard ...:	EN 60068-2-6
Acc. shock to standard1:	15g
Clearance & creepage dist. to:	EN 60664-1, EN 61131-2
Overvoltage category:	II
Pollution degree clear.&creep.:	2
Protection type standard:	EN 60529
<b>Mechanical data</b>	
Housing material lower section:	PC
Housing material front plate:	PC
Housing material code:	PA
Terminal style:	plug-in
Height dimension:	76 mm
Width dimension:	25.2 mm
Depth dimension:	60.2 mm
Net weight:	62 g
Gross weight:	71 g
Name of coding element:	I
Colour of coding element:	Dark grey
<b>Environment</b>	

WEEE klassifikation (08/2018):	5 devices (feed size < 50cm)
<b>Commercial data</b>	
Harmonized System Code:	85389091
UNSPSC 25:	39122331
EAN-Code:	4046548052589
ECLASS version:	ECLASS-13
ECLASS Reference Feature:	27242604
ETIM Version:	ETIM-9.0
ETIM Reference Group:	EG000024
ETIM Reference Feature:	EC001599
Volume:	0.146 dm3

## Obligatory accessories



312631

PSSu BP-C 2/16 C



312629

PSSu BP 2/16 C



312628

PSSu BP 2/16 S



312630

PSSu BP-C 2/16 S

## Optional accessories



312900

PSSu A ET (10 pcs.)



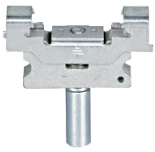
312902

PSSu A EC



312967

PSSu A LA0.1 (10 x 108 pcs.)



312901

PSSu A ETM (2 pcs.)



312958

PSSu A LA0 (10 x 108 pcs.)



312949

PSSu A ET PE (10 pcs.)