

O300.GP.2-11246332

Diffuse sensors with background suppression - miniature

Article number: 11246332

Overview

- Sensor for safe monitoring of the carton supply on packaging machines
- Use with miniature control unit PNOZmulti 2 or safety relay myPNOZ
- Uniquely reliable and extremely insensitive to ambient light
- Baumer PinPoint LED: Small, homogeneous light spot with sharp edges



Picture similar



Technical data

General data		Electrical data	
Type	Background suppression	Current consumption typ.	16 mA (@ 24 VDC)
Light source	Pulsed PinPoint LED	Voltage drop Vd	< 2.5 VDC
Sensing distance Tw	100 mm	Output function	Light operate
Sensing range Tb	30 ... 100 mm	Output circuit	Push-pull
Alignment / soiled lens indicator	Flashing output indicator	Output current	< 100 mA
Power on indication	LED green	Short circuit protection	Yes
Light indicator	LED yellow	Reverse polarity protection	Yes
Sensing distance adjustment	No	Mechanical data	
Wave length	630 nm	Width / diameter	12.9 mm
Suppression of reciprocal influence	Yes	Height / length	32.3 mm
Alignment optical axis	< 2°	Depth	23 mm
Electrical data		Type	Rectangular
Response time / release time	< 2.4 ms	Housing material	Plastic (ASA, PMMA)
Voltage supply range +Vs	10 ... 33 VDC	Front (optics)	PMMA
Current consumption max. (no load)	40 mA (@ 10 VDC)	Connection types	Connector M8 4 pin
		Ambient conditions	
		Protection class	IP 67
		Operating temperature	-25 ... +60 °C
		Storage temperature	-40 ... +70 °C

Remarks

- Max. operating altitude above sea level: 2000m

O300.GP.2-11246332

Diffuse sensors with background suppression - miniature

Article number: 11246332

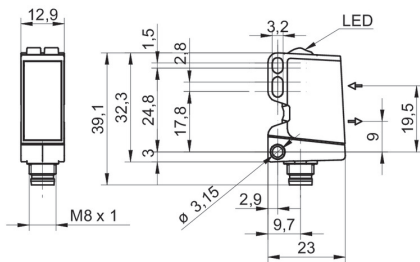
Remarks

EMC requirements: Emission/immunity for proximity switches according to product standard IEC 60947-5-2

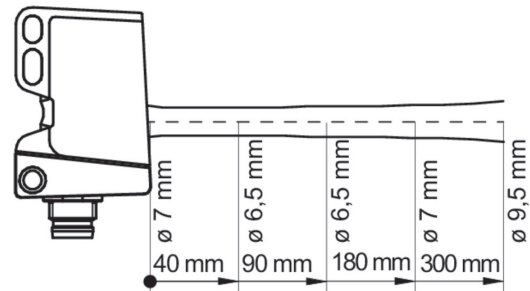
Environmental requirements for proximity switches according to product standard IEC 60947-5-2

Environment influence	Basic standard	Required test severity (standard)	Extended test severity (Baumer)
protection class	IEC 60529	IP54	IP 67
Vibration, sinusoidal	IEC 60068-2-6	10 - 55 Hz, Ampl.: 0.5 mm 30 min per axis	10 - 57 Hz, Ampl.: 1.5 mm 58 - 2000 Hz, 10g 10 cycles of 15 min per axis
Shock / Bump	IEC 60068-2-27	30 g / 11 ms, 6 pulses per axis and direction	50g / 11 ms, 100g / 6 ms, 10 pulses per axis and direction 100g / 2 ms, 5000 pulses per axis and direction

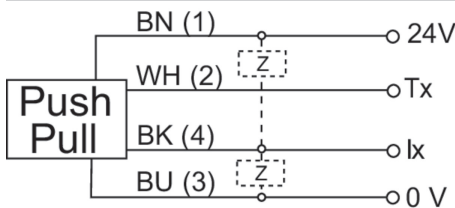
Dimension drawing



Beam characteristic (typically)



Connection diagram



Pin assignment

