

Cable PMCprimo mini-I/O enc SubD9

Connector pin assignment

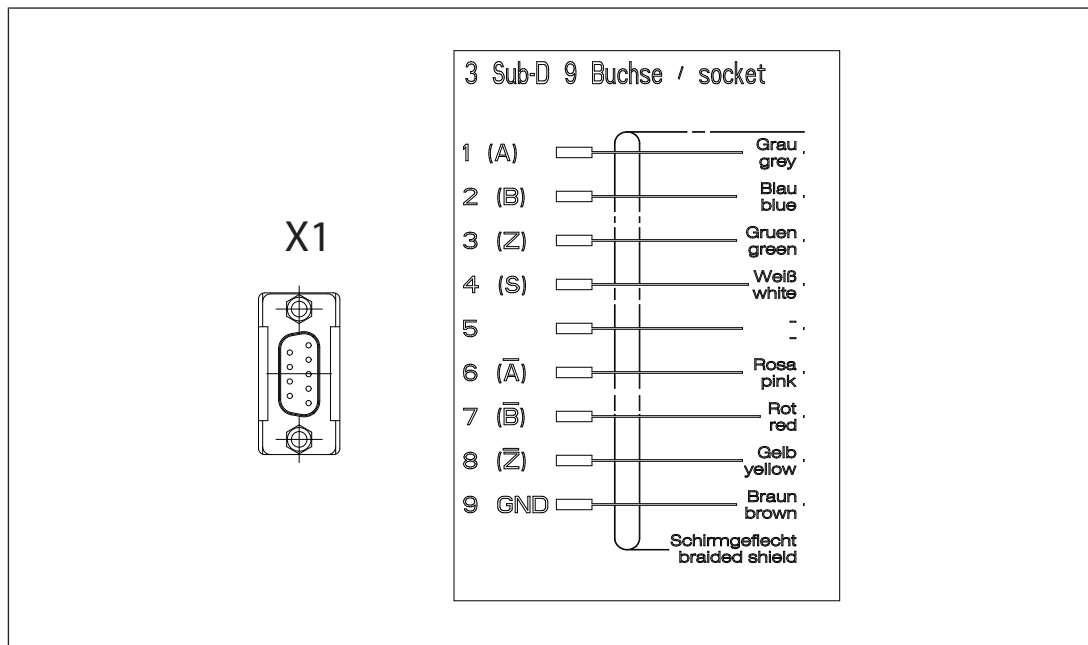


Fig.: Connector pin assignment X1

Legend

[X1] SubD 9-pin female connector

SubD 9-pin female connector		
Pin	Incremental encoder with TTL signal	Absolute encoder with SSI interface
1	A (Channel A)	CLOCK (Clock signal)
2	B (Channel B)	DATA (Data)
3	Z (Reference pulse Z)	n. c.
4	V+ (Supply voltage)	V+ (Supply voltage)
5	n. c.	n. c.
6	A\ (Channel A inverted)	CLOCK\ (Clock signal inverted)
7	B\ (Channel B inverted)	DATA\ (Data inverted)
8	Z\ (Reference pulse Z inverted)	n. c.
9	0 V (Supply voltage 0 V)	0 V (Supply voltage 0 V)
--	Shield	Shield
	n. c. = not connected	

Cable PMCprimo mini-I/O enc SubD9

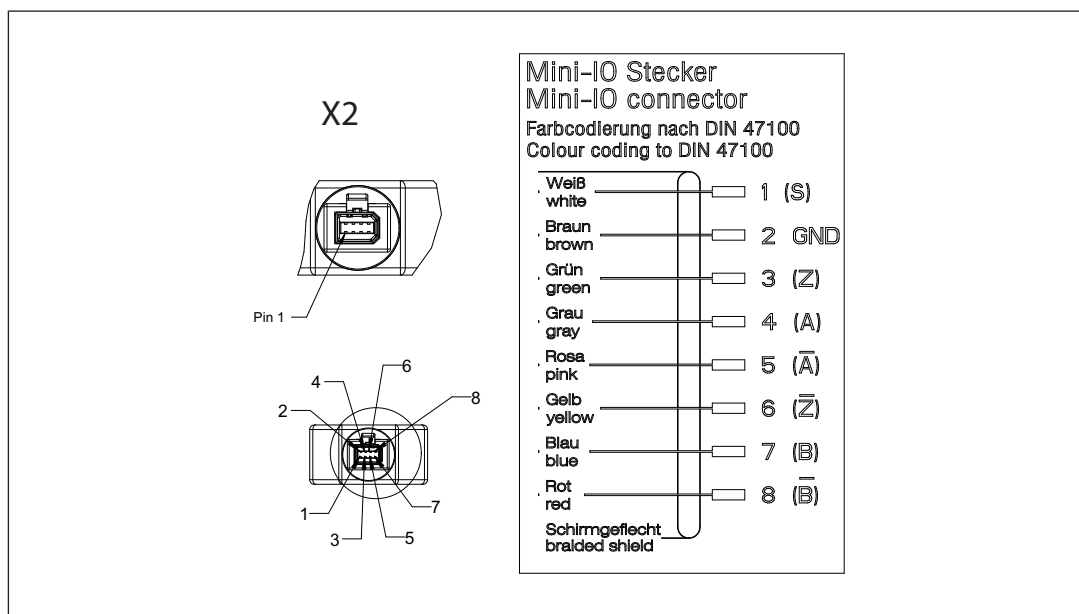


Fig.: Connector pin assignment X2

Legend

[X2] Mini I/O connector

Mini I/O connector		
Pin	Incremental encoder with TTL signal	Absolute encoder with SSI interface
1	V+ (Supply voltage)	V+ (Supply voltage)
2	0 V (Supply voltage 0 V)	0 V (Supply voltage 0 V)
3	Z (Reference pulse Z)	n. c.
4	A (Channel A)	CLOCK (Clock signal)
5	A\ (Channel A inverted)	CLOCK\ (Clock signal inverted)
6	Z\ (Reference pulse Z inverted)	n. c.
7	B (Channel B)	DATA (Data)
8	B\ (Channel B inverted)	DATA\ (Data inverted)
--	Shield	Shield
	n. c. = not connected	

Cable PMCprimo mini-I/O enc SubD9

Dimensions

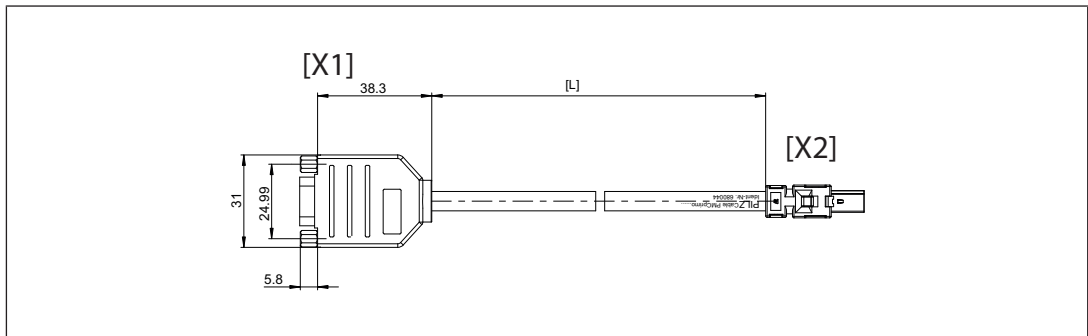


Fig.: Cable PMCprimo mini-I/O enc SubD9

Legend

- [X1] SubD 9-pin female connector
- [X2] Mini I/O connector
- L Length 0.75 m

Accessories

Cable PMCprimo mini-I/O enc SubD9

Technical details

General	
Certifications	CE, UKCA
Environmental data	
Protection type	
X1 when inserted	IP20
X2 when inserted	IP20
Mechanical data	
Plug-in connector X1	9-pin D-Sub female connector
Form, plug-in connector X1	Straight
Plug-in connector X2	8-pin Mini-IO male connector
Form, plug-in connector X2	Straight
Cable length L1	0,75 m
Colour of external cable insulation K1	Green
Colour of external cable insulation K2	Green
Drag chain suitable K1	No
Cable diameter K1	6 mm
Shielding K1	yes
Shield type K1	Wire mesh
Weight	56 g

Order reference

Product type	Features	Connector X1	Connector X2	Order no.
Cable PMCprimo mini-I/O enc. SubD9	0.75 m	SubD, 9-pin female connector	Mini I/O connector	680044